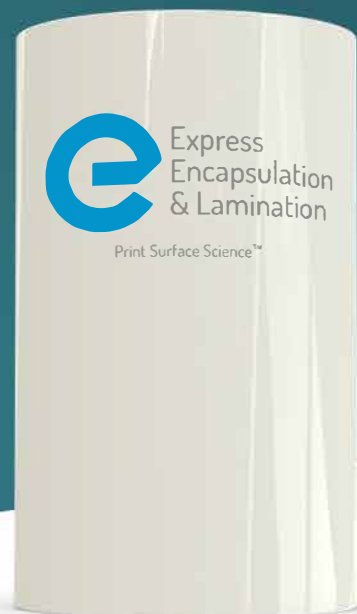


Litho Pro

Toner Receptive

Toner Receptive Film suitable for overprinting metallics and foils, 50% cheaper than traditional TRF velvet film



Litho Lamination Film

Our products and services protect print, making it more reliable in demanding environments.

Litho Pro

Toner Receptive



Litho TRF film is suitable for laminating litho print. The receptive outer coating on the film accepts digital toner allowing it to be overprinted, including metallics and foils. New gloss and matte finishes are up 50% cheaper than traditional TRF velvet film. Compatible with toner from machines including Xeikon, Xerox iGen, Konica Minolta, Konica, HP and Canon.

Use on

Menus | Packaging | Folders | Brochures

Features

- > Designed for overprinting metallics and foils
- > Economical overprinting film
- > Low melt adhesive coating inside

Sizes and Specs

- > 315mm / 440mm / 445mm widths
- > 77mm core
- > 1000m lengths
- > Gloss 30mic

Properties

Thickness:	30µm
Laminating Temperature:	95-115°C
Wetting Tension:	44 Dynes/cm

Useful info

Clean and dry print surface before application. Please store this product in a cool, dry place away from direct sunlight. Figures provided are guidance only. All values and information are approximate. Please test before use.

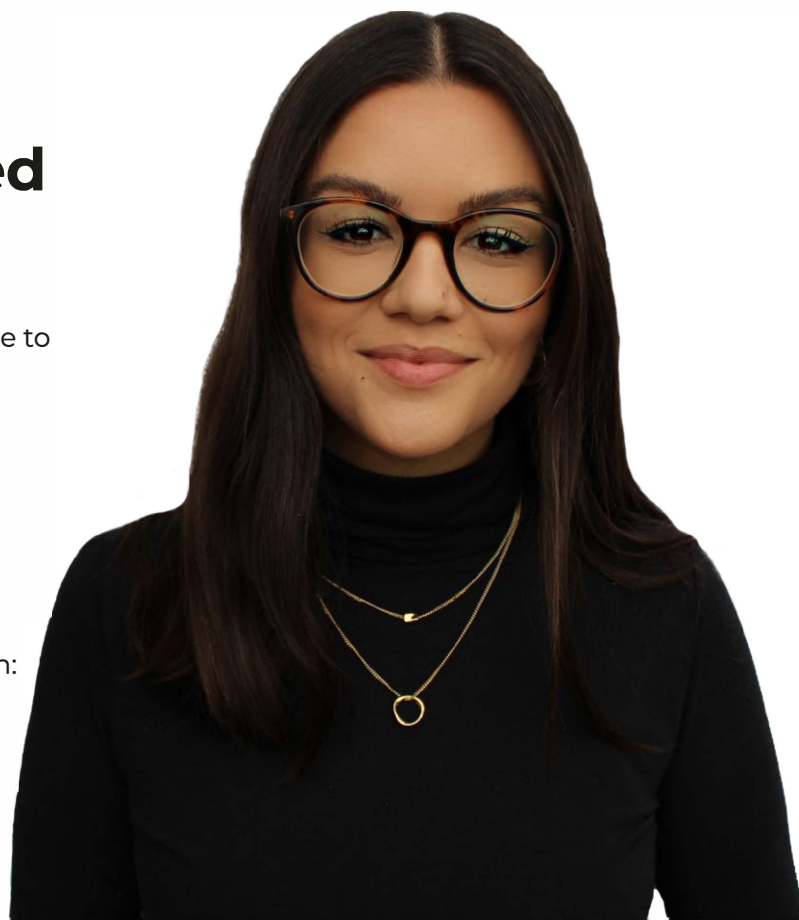
Litho film delivered in 48 hours

We know you need film fast so we promise to get it to you within 48 hours if you order before 3pm.

[Shop Litho Pro TRF ›](#)

Got a question? Contact Chloë McGuire on:

01179 414 999
sales@expressencap.co.uk
expressencap.co.uk



Litho Pro

Toner Receptive

Toner Receptive Film suitable for overprinting metallics and foils, 50% cheaper than traditional TRF velvet film



Litho Lamination Film

Our products and services protect print, making it more reliable in demanding environments.

Litho Pro

Toner Receptive



Litho TRF film is suitable for laminating litho print. The receptive outer coating on the film accepts digital toner allowing it to be overprinted, including metallics and foils. New gloss and matte finishes are up 50% cheaper than traditional TRF velvet film. Compatible with toner from machines including Xeikon, Xerox iGen, Konica Minolta, Konica, HP and Canon.

Use on

Menus | Packaging | Folders | Brochures

Features

- > Designed for overprinting metallics and foils
- > Economical overprinting film
- > Low melt adhesive coating inside

Sizes and Specs

- > 315mm / 440mm / 445mm widths
- > 77mm core
- > 1000m lengths
- > Matte 25mic

Properties

Thickness:	25µm
Laminating Temperature:	95-115°C
Wetting Tension:	46 Dynes/cm

Useful info

Clean and dry print surface before application. Please store this product in a cool, dry place away from direct sunlight. Figures provided are guidance only. All values and information are approximate. Please test before use.

Litho film delivered in 48 hours

We know you need film fast so we promise to get it to you within 48 hours if you order before 3pm.

[Shop Litho Pro TRF ›](#)

Got a question? Contact Chloë McGuire on:

01179 414 999
sales@expressencap.co.uk
expressencap.co.uk

